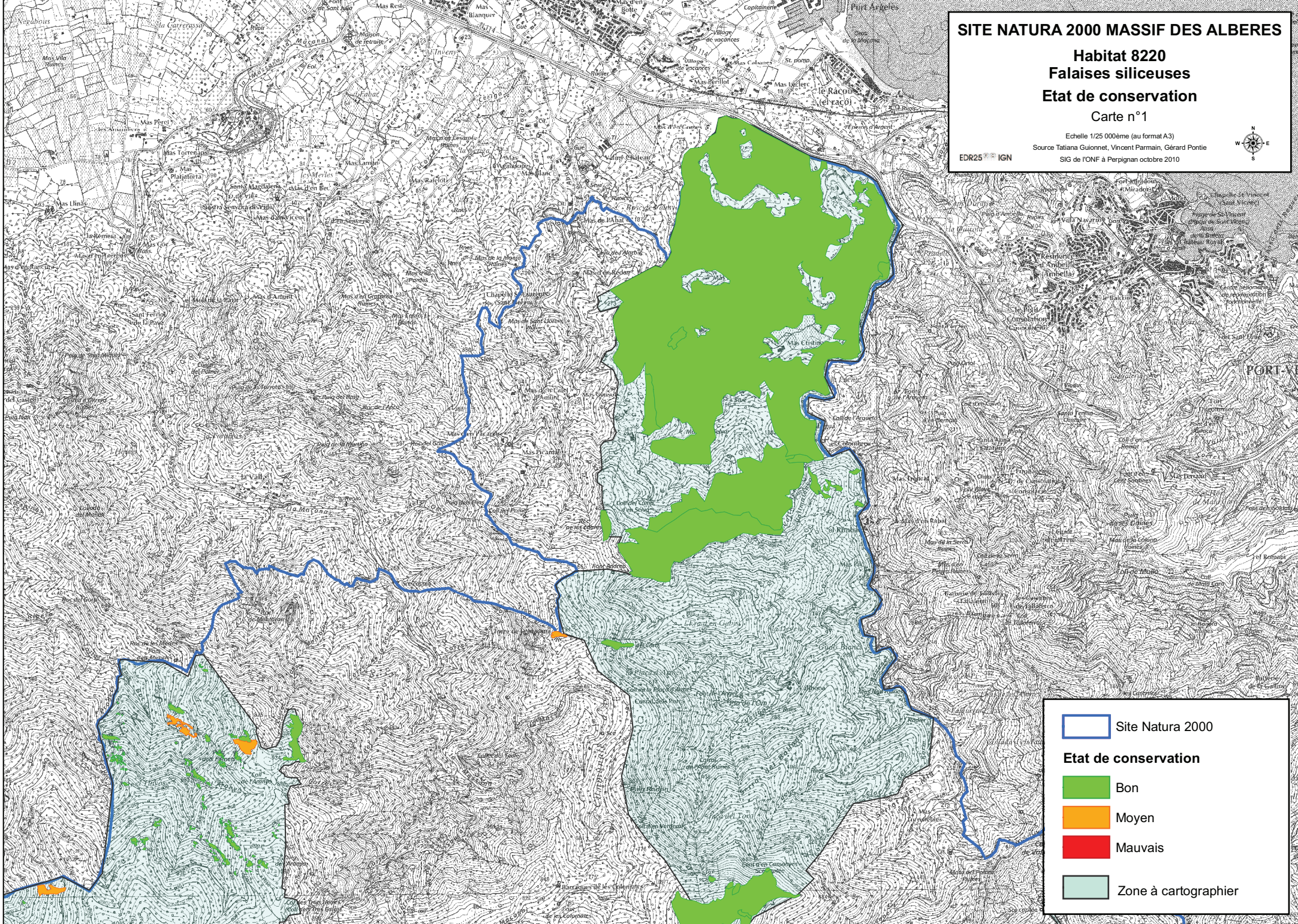







**SITE NATURA 2000 MASSIF DES ALBERES**

**Habitat 8220**  
**Falaises siliceuses**  
**Etat de conservation**  
**Carte n°1**

Echelle 1/25 000ème (au format A3)  
 Source Tatiana Guionnet, Vincent Parmain, Gérard Pontie  
 SIG de l'ONF à Perpignan octobre 2010

 Site Natura 2000  
**Etat de conservation**  
 Bon  
 Moyen  
 Mauvais  
 Zone à cartographier



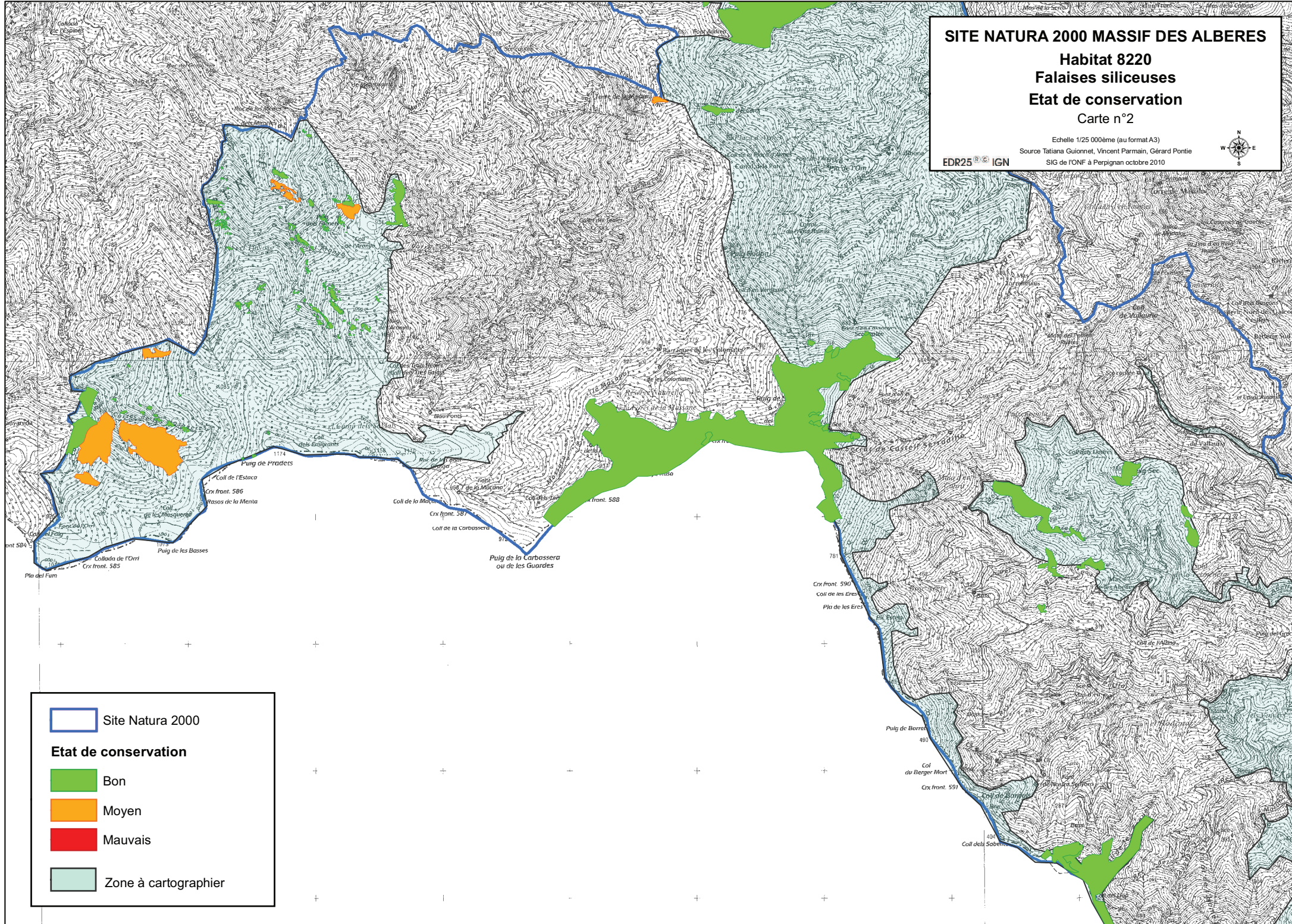
# SITE NATURA 2000 MASSIF DES ALBERES

## Habitat 8220 Falaises siliceuses Etat de conservation Carte n°2

Echelle 1/25 000ème (au format A3)  
Source Tatiana Guinnet, Vincent Parraïn, Gérard Pontie  
SIG de IONF à Perpignan octobre 2010



EDR25 IGN



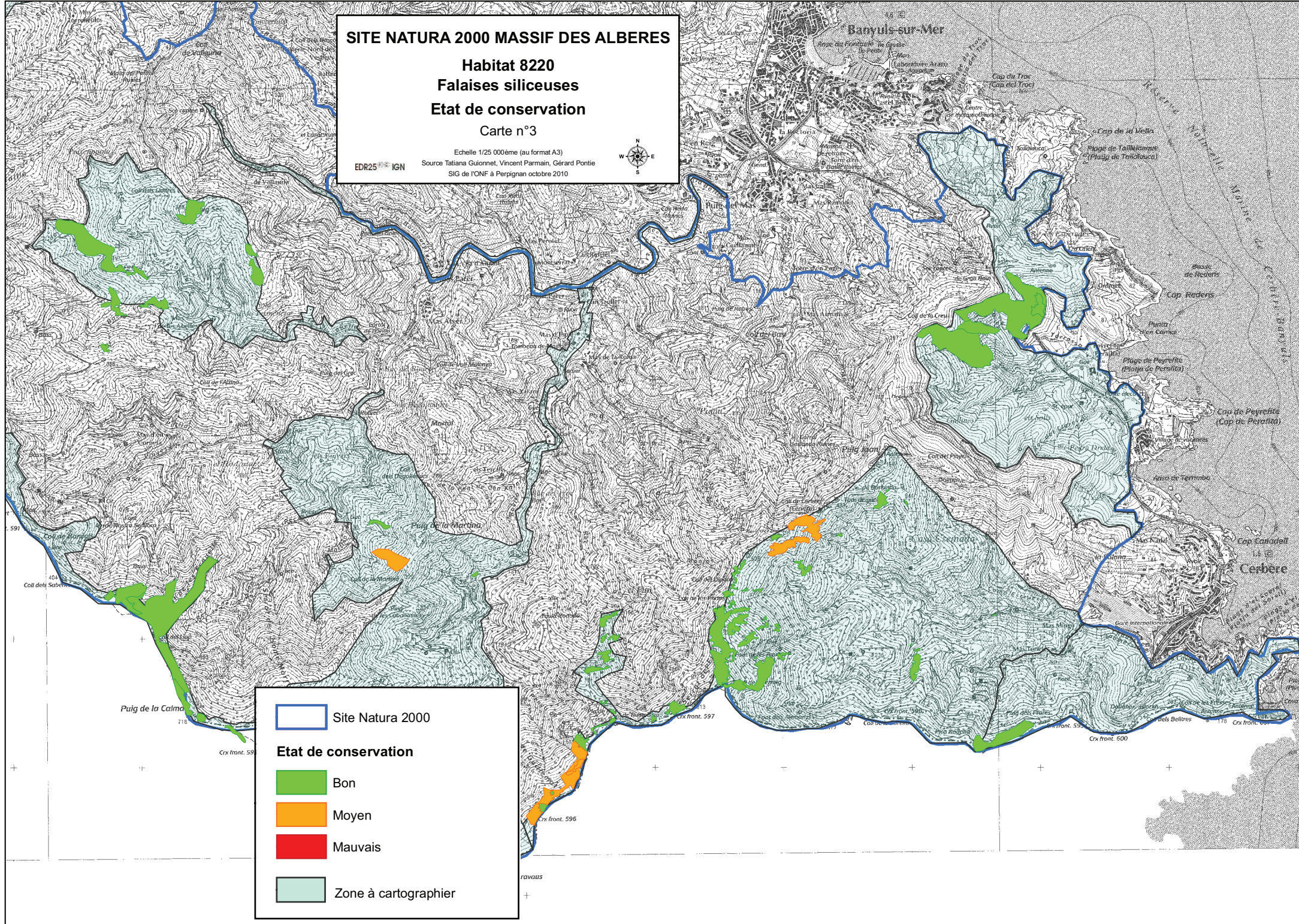
	Site Natura 2000
<b>Etat de conservation</b>	
	Bon
	Moyen
	Mauvais
	Zone à cartographier








**SITE NATURA 2000 MASSIF DES ALBERES**

**Habitat 8220**  
**Falaises siliceuses**  
**Etat de conservation**  
**Carte n°3**

Echelle 1/25 000ème (au format A3)  
 Source Tatiana Guionnet, Vincent Parmain, Gérard Pontie  
 SIG de l'ONF à Perpignan octobre 2010



	Site Natura 2000
<b>Etat de conservation</b>	
	Bon
	Moyen
	Mauvais
	Zone à cartographier